

ELVIS – THE KING

– Medley –

Arrangement:
Stefan Schwalgin

Allegro moderato

1 *tr*

poco f *f*

7 1. You're the Devil in Disguise

Horn 2 (2) (3) (4)

p leggiero

12 *play tr* **Double Time** (♩ = ♩) *ten.!* 16 Horn 2

mp *f* *fz* *mf* *f*

18 *play* Horn 2 *play* Horn 2 *play* Horn 2

mf *f* *mf* *f* *mf* *f*

24 *play* 2 2

f

32

mf

37 **Half Time** (♩ = ♩) 39 *f* *p leggiero*

42 *tr* **Double Time** (♩ = ♩) *ten.!* *mp* *f* *fz*

48 Horn 2 *play* Horn 2 *play*

mf *f* *mf* *f* *mf*

1.) © Kobalt Music / Raleigh Group / Nolesto Works. With courtesy of Budde Music Publishing.
 2.) © Kobalt Music / Raleigh Group / Nolesto Works. With courtesy of Budde Music Publishing.
 3.) © 1968 Sony/ATV Music Publishing LLC. Copyright Renewed. All Rights Administered by Sony/ATV Music Publishing LLC, 424 Church Street, Suite 1200, Nashville, TN 37219. International Copyright Secured. All Rights Reserved. Used by permission of Hal Leonard Europe Limited.
 4.) © Kobalt Music / Raleigh Group / Nolesto Works. With courtesy of Budde Music Publishing.

53 *Horn 2* *play* *f* *mf* *f* *play* *f* **56**

58

63 *mf*

68 *f* *Slow Blues Tempo* *p* *tr*

75 2. Can't Help Falling in Love *mf* *cresc.* *f* *dim.* **79** 8

87 6 *Horn 1-3* *ff* *play* *mp* *mf* *mp* *mf* **95**

97 *mp* *mf* *mf* **100** *fp* *f ten.*

102 *f* *Horn 1-3* 2

107 Straight Beat *play* *mp* *poco cresc.* *mf* *dim.* **111** 3. Suspicious Minds *p* 3

115 Horn 1-3 *play* **119**
p *mp* < *mf*

121

127 *f* *play* *f* Flug. 1, 2

135 Quasi Waltz
 Clar. 1 (b) *mf*

141 *play* *p*

150 Straight Beat *mf* *f*

154 **158**

159

4. Jailhouse Rock
rit. **166** Bright Shuffle Rock *hand claps* (2) (3)

171 (4) *play* *mf*

177 *f*

182



187



190

192



198

199



204

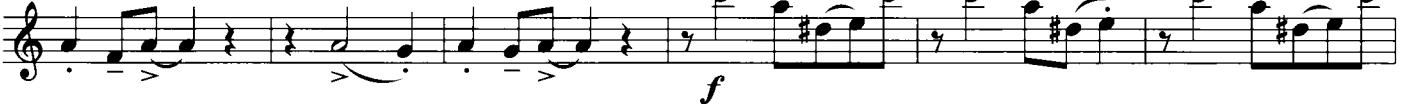


206 *Open for Solos* Optional Ending(s) Final Ending 216

219



225



228

231



236



240

242



247

