

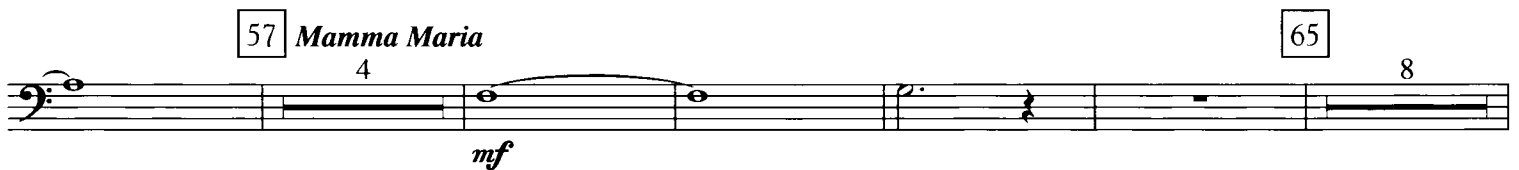
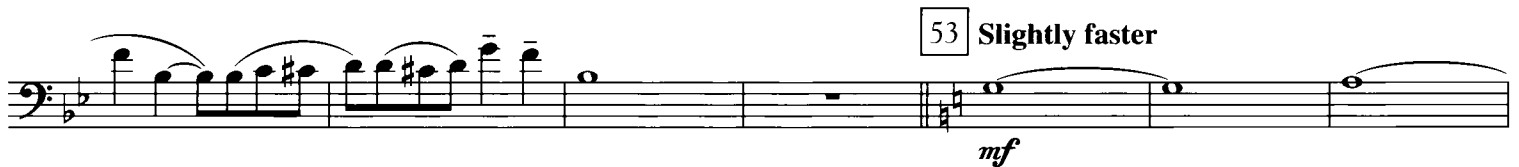
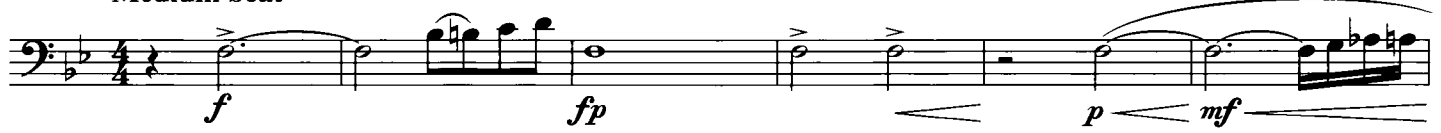
ITALO OLDIES

arr. Stefan Schwalgin

Azzurro - Mamma Maria - L'Italiano - Volare

Full recording on:
Funky Winds
DHR 01-047-3

Medium beat



EUPHONIUM

73

mf

81

85

f marcato e tenuto

93 Easy swing feel $\text{♩}/\text{♩} = \text{♩}$

96 *L'Italiano*

mf legato

mf legato

mf legato

112

mf legato

f

130 Andantino rubato $\text{♩} = \text{♩}$

mf legato *p*

EUPHONIUM

Bright samba 139 *Volare*

First staff of music, bass clef, key signature of two flats. It begins with a whole rest, followed by a melodic line with eighth notes and a slur. A dynamic marking *f* is placed below the staff.

Second staff of music, bass clef, key signature of two flats. It continues the melodic line with eighth notes and slurs. A dynamic marking *fz* is placed below the staff.

Third staff of music, bass clef, key signature of two flats. It continues the melodic line with eighth notes and slurs. A dynamic marking *fz* is placed below the staff.

Fourth staff of music, bass clef, key signature of two flats. It features a long, sustained note with a slur. A box containing the number 155 is at the start. The staff is marked *Hn. 4*. Dynamics include *p*, *poco cresc.*, *mp*, and *poco cresc.*

Fifth staff of music, bass clef, key signature of two flats. It features a long, sustained note with a slur. Dynamics include *mf* and *fp cresc.*

Sixth staff of music, bass clef, key signature of two flats. It features a long, sustained note with a slur. Dynamics include *mf*, *fp*, and *ff*.

Seventh staff of music, bass clef, key signature of two flats. It begins with a box containing the number 179 and the word *Play*. The staff starts with a dynamic marking *f*.

Eighth staff of music, bass clef, key signature of two flats. It features a melodic line with eighth notes and slurs. A box containing the number 187 is present. Dynamics include *fz*, *div.*, and *All fz*.

Ninth staff of music, bass clef, key signature of two flats. It features a melodic line with eighth notes and slurs. Dynamics include *div.*, *All fz*, and *div.*

Tenth staff of music, bass clef, key signature of two flats. It features a melodic line with eighth notes and slurs. Dynamics include *All fz*, *fp*, and *ff*.